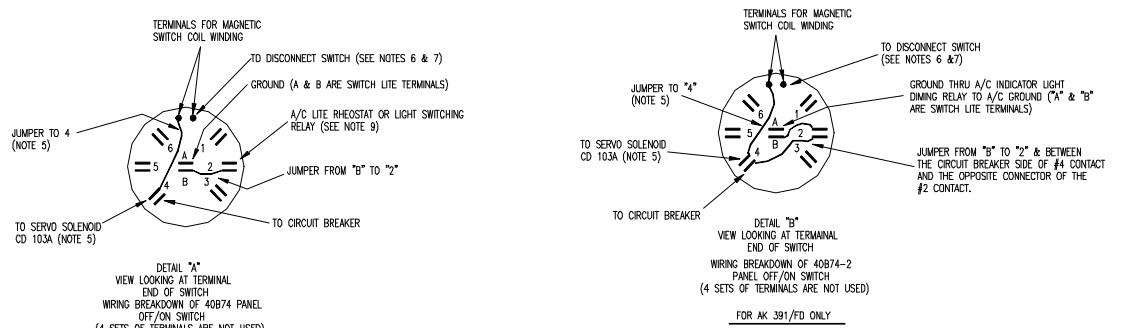
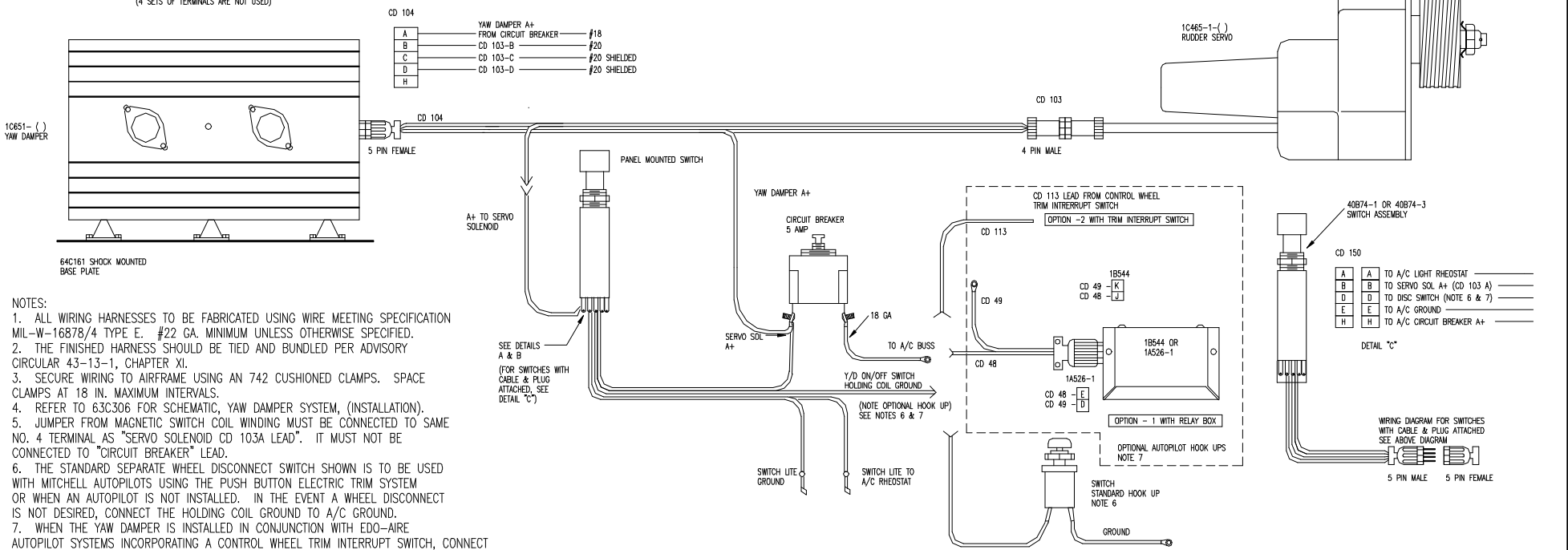


REVISIONS							
LTR	DESCRIPTION	DATE	APPROVED	LTR	DESCRIPTION	DATE	APPROVED
H	REV PER FECCO 1216	3-30-77	JLS	---	REL. PER E.O. 6737	9-29-72	CJW
V	REV PER FECCO 1714	3-28-78	ACK	A	REV PER E.O. 6855	12-12-72	JLS
K	RECDRAWN PER FO 10113	8-30-78	JCP	B	REV PER FECCO 081	3-28-73	JLS
L	REV PER E.O. 16767	5-4-98	S.C.	C	REV PER FECCO 092	4-27-73	JLS
M	REV PER E.O. 16972	1-15-99	S.C.	D	REV PER E.O. 7579	12-4-73	ACK
				E	REV PER FECCO 195	1-7-74	ACK
				F	REV PER FECCO 217	3-18-74	JLS
				G	REV PER FECCO 1082	11-15-76	JLS



#	CD	SWITCH
#20	40874-	() SWITCH
#20	CD 104-B	A
#20	CD 104-D	B
#20	CD 104-E	C
#20	CD 104-E	D



- NOTES:
- ALL WIRING HARNESSES TO BE FABRICATED USING WIRE MEETING SPECIFICATION MIL-W-16878/4 TYPE E. #22 GA. MINIMUM UNLESS OTHERWISE SPECIFIED.
 - THE FINISHED HARNESS SHOULD BE TIED AND BUNDLED PER ADVISORY CIRCULAR 43-13-1, CHAPTER XI.
 - SECURE WIRING TO AIRFRAME USING AN 742 CUSHIONED CLAMPS. SPACE CLAMPS AT 18 IN. MAXIMUM INTERVALS.
 - REFER TO 63C306 FOR SCHEMATIC, YAW DAMPER SYSTEM, (INSTALLATION).
 - JUMPER FROM MAGNETIC SWITCH COIL WINDING MUST BE CONNECTED TO SAME NO. 4 TERMINAL AS "SERVO SOLENOID CD 103A LEAD". IT MUST NOT BE CONNECTED TO "CIRCUIT BREAKER" LEAD.
 - THE STANDARD SEPARATE WHEEL DISCONNECT SWITCH SHOWN IS TO BE USED WITH MITCHELL AUTOPILOTS USING THE PUSH BUTTON ELECTRIC TRIM SYSTEM OR WHEN AN AUTOPILOT IS NOT INSTALLED. IN THE EVENT A WHEEL DISCONNECT IS NOT DESIRED, CONNECT THE HOLDING COIL GROUND TO A/C GROUND.
 - WHEN THE YAW DAMPER IS INSTALLED IN CONJUNCTION WITH EDO-AIRE AUTOPILOT SYSTEMS INCORPORATING A CONTROL WHEEL TRIM INTERRUPT SWITCH, CONNECT ONE SIDE OF THE HOLDING COIL OF THE YAW DAMPER ON/OFF SWITCH TO THE CD 113 LEAD OF THE TRIM INTERRUPT SWITCH ASSEMBLY FOR INSTALLATIONS INSTALLED IN CONJUNCTION WITH AN EDO-AIRE MITCHELL AUTOPILOT USING A 1A526-1 OR 1B544 RELAY BOX OR A 1C717 ROLL LIMITER, THE YAW DAMPER ON/OFF SWITCH MAY BE WIRED THROUGH THE RELAY AT CD 48 & CD 49.
 - REWIRING OF THE JUMPER BETWEEN "B" AND PIN "4" IS REQUIRED FOR AK391/FD ONLY.
 - FOR YK 384, CONNECT THE OPEN CONTACT AT TERMINAL #2 OF THE YAW DAMPER ENGAGE SWITCH TO THE LIGHT SWITCHING RELAY. (NORMALLY OPEN CONTACT WHEN MASTER SWITCH IS IN THE ON POSITION).

YK 526	THIS DRAWING IS THE PROPERTY OF CENTURY FLIGHT SYSTEMS, INC. IT IS TO BE KEPT IN CONFIDENCE AND NOT TO BE REPRODUCED OR COPIED IN WHOLE OR IN PART, ANY PART THEREOF, WITHOUT THE WRITTEN PERMISSION OF CENTURY FLIGHT SYSTEMS, INC.	DRAWN JLS	8-7-72
YK 493		RECDRAWN J.A.N. PRUITT	5-1-98
YK 491	TOLERANCES UNLESS OTHERWISE SPECIFIED	CHECKED	
YK 444	FRACTIONS: 1/8, 1/16	ENGINEER	8-7-72
YK 444	DECIMALS: XX.X ± .005	EDC	8-7-72
YK 428	DECIMALS: XX.X ± .010	APPROVED	8-7-72
YK 385	ANGLES ± 0° - 30°	JU	8-7-72
YK 384	RADIUS: RIBES AND BREAK SWAMP EDGES	FILE NAME:	630894.dwg
YK 380	DO NOT SCALE DRAWING		
USED ON	USED ON		
APPLICATION	FINISH		

SIZE	DWG NO.	REV
D	69D894	M
SCALE	FILE: ACAD H:\USERS\DRAWING\SIZE_D	SHEET
NA		1 OF 1

CENTURY
FLIGHT SYSTEMS, INC. BOX 610, MUNICIPAL AIRPORT
MINERAL WELLS, TX, 76067

TITLE
PICTORIAL 10651- () YAW DAMPER
SYSTEM (INST'L)