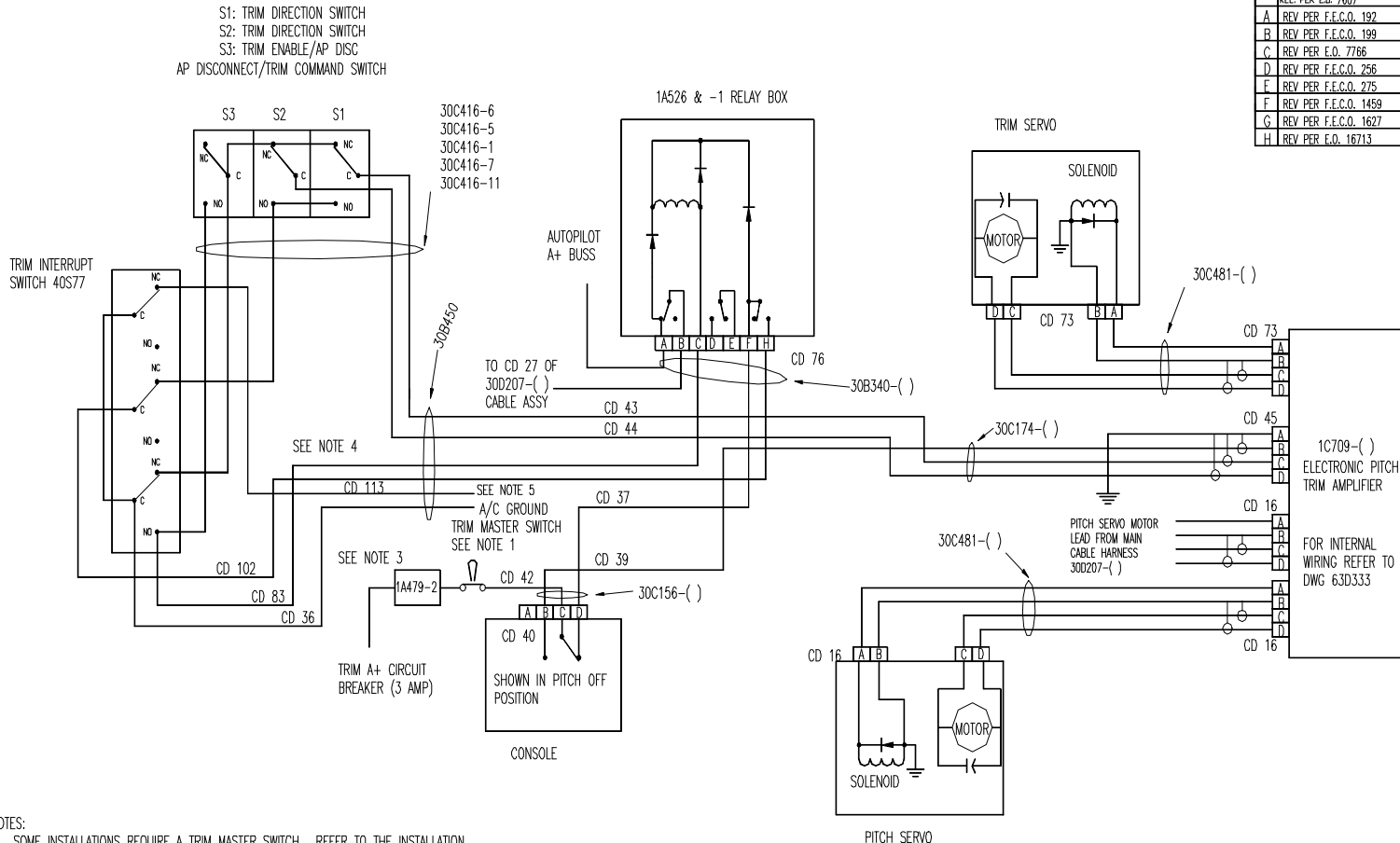


REVISIONS			
LTR	DESCRIPTION	DATE	APPROVED
—	REL. PER E.O. 7607	12-14-73	ADK
A	REV PER F.E.C.O. 192	1-10-74	JS
B	REV PER F.E.C.O. 199	1-30-74	JS
C	REV PER E.O. 7766	5-6-74	JS
D	REV PER F.E.C.O. 256	6-27-74	ADK
E	REV PER F.E.C.O. 275	8-16-74	JS
F	REV PER F.E.C.O. 1459	9-20-77	JDD
G	REV PER F.E.C.O. 1627	1-24-78	SMP
H	REV PER E.O. 16713	3-5-98	



NOTES:

- SOME INSTALLATIONS REQUIRE A TRIM MASTER SWITCH. REFER TO THE INSTALLATION BULLETIN FOR APPLICABILITY.
- THE FOLLOWING SEQUENCE MUST BE FOLLOWED TO DETERMINE OR CORRECT THE DIRECTION OF THE TRIM SERVO:
 - DETERMINE THAT THE PITCH SERVO IS ACTUATING IN THE PROPER DIRECTION (AUTOPILOT ON). IF NOT REVERSE DIRECTION OF PITCH SERVO BY REMOVING SERVO DUST COVER AND REVERSING THE BLACK AND RED SERVO MOTOR WIRES AT THE TERMINAL POST.
 - DETERMINE THAT THE TRIM SERVO TRIMS IN THE PROPER DIRECTION IN AUTOMATIC MODE (MUST FOLLOW PITCH SERVO). IF NOT REVERSE DIRECTION OF TRIM SERVO MOTOR BY REMOVING THE TRIM SERVO DUST COVER AND REVERSING THE RED AND BLACK SERVO MOTOR LEADS AT THE TERMINAL POST.
 - DETERMINE THAT TRIM SERVO TRIMS IN DIRECTION COMMANDED BY CONTROL WHEN TRIM SWITCH (AUTOPILOT OFF). IF NOT REVERSE DIRECTION BY REVERSING CD 43 AND CD 44 AT THE TRIM SWITCH CABLE ASSEMBLY.
- INSTALL NOISE FILTER WHEN REQUIRED AS INDICATED IN THE PARTS LIST OF THE INSTALLATION BULLETIN.
- THESE CONNECTIONS EXIST ONLY WHEN SWITCH & CABLE ASSEMBLY 30C416-5, 30C416-6 OR 30C416-11 IS USED. WHEN 30C416-1 OR 30C416-7 IS USED THESE CONNECTIONS WILL NOT BE PRESENT. WHEN USING 30C416-6 SWITCH & CABLE ASSEMBLY, THE 30B450 CABLE ASSEMBLY WILL NOT BE USED. REFER TO INSTALLATION BULLETIN.
- REFER TO YAW DAMPER INSTALLATION BULLETIN FOR CD 113 CONNECTION.

AK 776	AK 775	AK 453	AK 452	<small>USE DIMENSIONS IN THE PRESENCE OF DIMENSION LINES UNLESS OTHERWISE SPECIFIED BY DIMENSIONS OR UNLESS OTHERWISE SPECIFIED FOR SALE IN TABLE IN THIS PART. ALL DIMENSIONS UNLESS OTHERWISE SPECIFIED.</small> <small>TOLERANCES UNLESS OTHERWISE SPECIFIED</small> <small>DECIMALS: XX.XX ± .005</small> <small>FRACTIONS: 1/16 ± .001</small> <small>ANGLES: ± .5°</small> <small>REMOVE BURRS AND BREAK SHARP EDGES. DO NOT SCALE DRAWING.</small>
	AK 725	AK 431	AK 650	
	AK 719	AK 485	AK 599	
	AK 501	AK 498	AK 452	
	AK 504	AK 545	AK 453	
	AK 557	AK 580	AK 479	
	AK 589	AK 560	AK 465	
	AK 590	AK 592	AK 451	
	AK 638	AK 652	AK 450	
USED ON	USED ON	USED ON	USED ON	
APPLICATION				FINISH

DRAWN	ACK 12-11-73
CHECKED	BLB 12-12-73
ENGINEER	EDC 12-12-73
APPROVED	JRWIN 12-12-73
FILE NAME	63D345.DWG

<small>BOX 600, MUNICIPAL AIRPORT MIDLAND, TEXAS 79707</small>	
TITLE SCHEMATIC COMMAND/ AUTOMATIC TRIM SYSTEM (TYPE 17)	
SIZE D	DWG NO. 63D345
SCALE 1:1	SHEET 1 OF 1